

## Case Studies: Radar PTZ Tracking for FLNG using Simpify platform



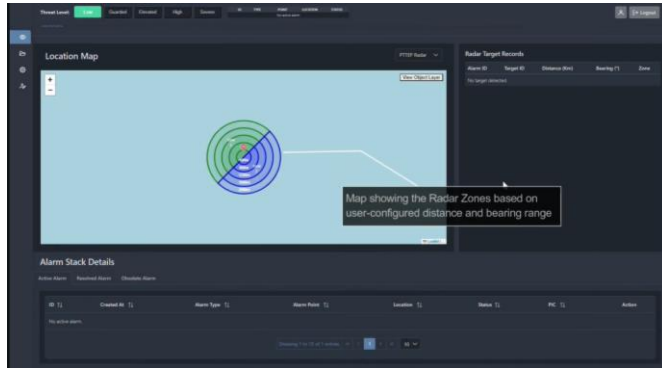
### Radar Integrated Multiple PTZ Tracking

Our system combines radar technology with multiple PTZ cameras to create an advanced surveillance solution. When radar detects an object entering an intrusion zone, the PTZ cameras are immediately activated to continuously track and monitor it. Whether overseeing an offshore platform, marine vessel, or sea or land border, this solution **provides comprehensive coverage and swift response to potential security threats**. It's like having a virtual security team working tirelessly to ensure your environment remains safe and secure.

## “How Do We Help Them?”

- Enhanced Tracking: Combines radar detection with PTZ long-range cameras' visual verification for accurate tracking of intruder vessels.
- Improved Situational Awareness: Provides clear understanding of vessel position, speed, and track for better decision-making.
- Redundancy and Reliability: Multiple PTZ cameras ensure continuous coverage and backup options if one camera fails.
- Optimized Resource Allocation: Radar autonomously detects targets, allowing PTZ cameras to focus on detailed inspection, optimizing response.
- Real-time Monitoring and Recording: Enables immediate action and provides evidence through real-time monitoring and recording capabilities.

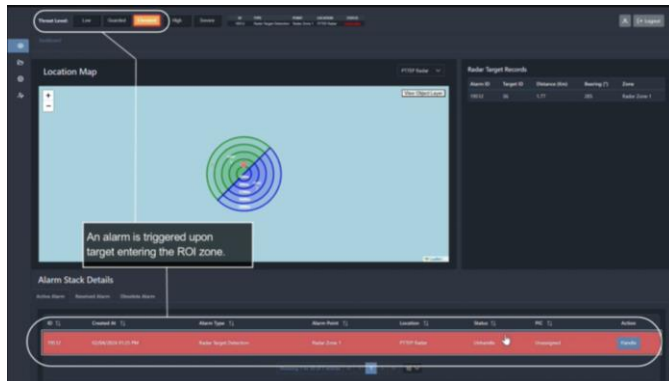
## How It Works?



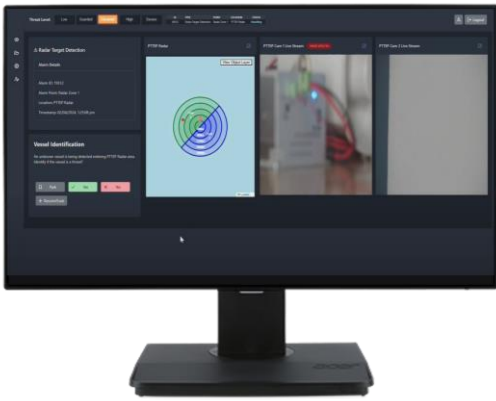
**UI Visualization:** The Simpify platform provides an intuitive user interface that displays a radar map with user-configured zones based on distance and bearing range. This helps in monitoring specific areas effectively.



**Data Transmission:** The system continuously sends Tracked Target Messages (TTM) to the Simpify Server, ensuring up-to-date information on all detected targets.



**Alarm Trigger:** An alarm is immediately triggered when a target or intruder enters the predefined Region of Interest (ROI) zone, allowing for prompt response.



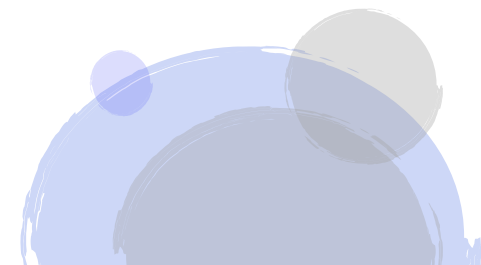
**Alarm SOP :** The Simplify Platform follows detailed and configured Standard Operating Procedures (SOPs) to manage alarms effectively. The SOP can be customized while adhering to the company's standard policy.

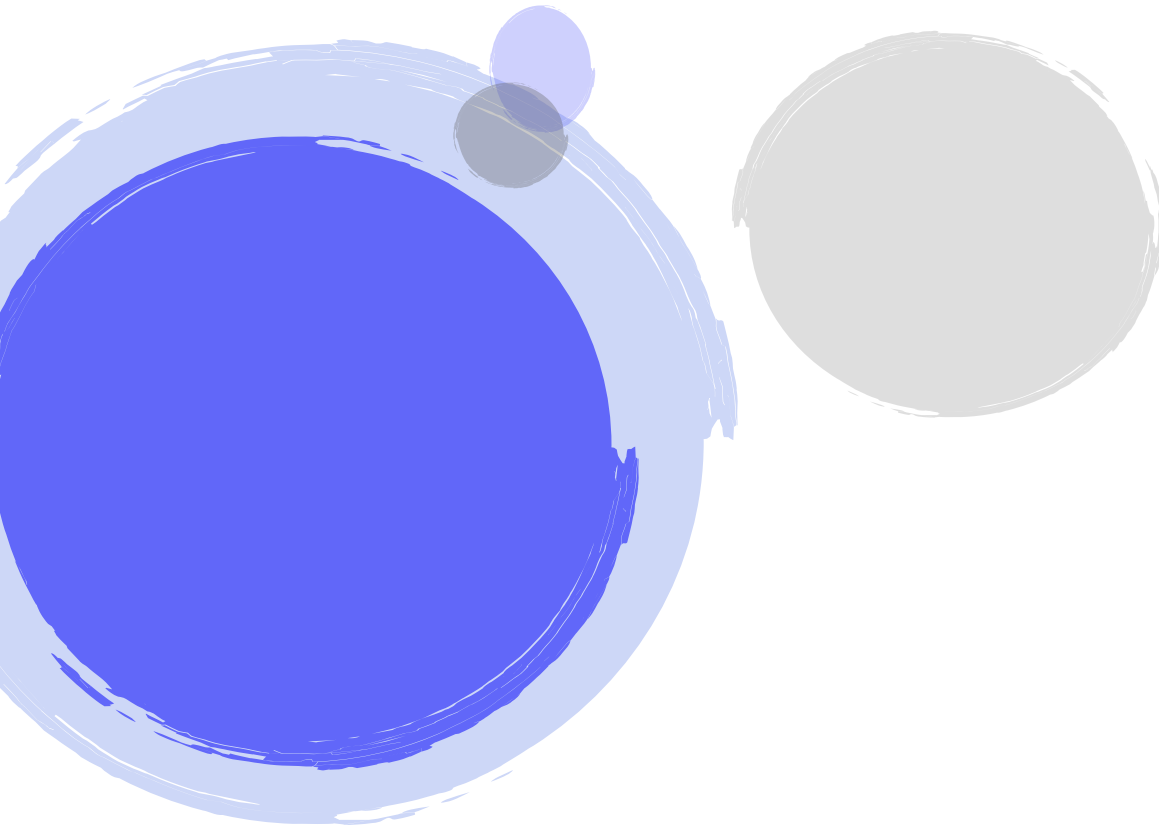
Once an intruder is detected, the PTZ camera pans and tilts to the real-time target location (TTM) for precise identification.

If the situation is deemed dangerous, the threat level is elevated accordingly.

The platform then activates multiple PTZ tracking functions, ensuring continuous and accurate monitoring of the intruder's real-time location.

Finally, the alarm is resolved efficiently, ensuring that






## Simpnify


### Singapore (HQ)

 55 Toh Guan Road East, #06-01 Uni-Tech Centre, Singapore, 608601

 +65 6680 9321

### Malaysia

 No 2, Jalan Laman Setia 7/6, Setia Business Park 81550 Gelang Patah, Johor, Malaysia

 +607 5950 387

 [enquiry@simpnify.com](mailto:enquiry@simpnify.com)

 <https://www.simpnify.com>



Simpnify



 YouTube



 LinkedIn

